

Mobile Phone Cellular Reception Repeaters

**CEL-FI GO - FULLY APPROVED CELLULAR PHONE SIGNAL REPEATERS FOR VEHICLES & BUILDINGS**



Cel-Fi GO is Nextivity's most versatile cellular coverage solution that can be used for vehicles on-the-go or in-building spaces up to 1500m<sup>2</sup>.

Indoor / Outdoor Smart Signal Booster is ideal for use in commercial properties, government buildings, agricultural settings, small manufacturing operations, rural areas, businesses, and large homes.

<https://www.cel-fi.com/go-stationary/>

Mobile Smart Signal Booster is ideal for trucks, automotive, RVs, and marine installations. The first carrier-class mobile cellular coverage solution to feature industry leading 65 dB system gain.

<https://www.cel-fi.com/go-mobile/>

**THE CEL-FI REPEATER HAS BEEN TESTED, AUTHORISED AND APPROVED BY EACH NETWORK PROVIDER:**



**Instant Mobile Coverage**

Use your mobile when you need it. Clear and reliable 3G and 4G voice and internet. Mobile Signal boosted!



**Large Coverage Area**

Ideal for an office or average size home, Cel-Fi phone booster has one of the largest coverage areas of any consumer repeater.



**Multiple Users**

High capacity signal booster with more than enough coverage for an average size home or office.



**Telstra, Optus, Vodafone Approved**

Tested and approved for use on the Telstra, Optus & Vodafone Mobile Networks.



**App Control**

Wireless Bluetooth® enabled for PC, Android and iOS WAVE App control of various Cel-Fi settings & status.



**Easy Setup**

Cel-Fi signal booster automatically configures itself according to your environment making for a quick and easy setup.



**Save Phone Battery**

Make your mobile's battery last longer. The less your phone has to work to get signal, the less you need to charge..



**Need Only 1 Bar**

1 bar of 3G mobile signal at a window is all you need! Cel-Fi will do the rest and boost up your mobile signal.

Cellular Reception Extenders Mobile Cel-Fi GO

## CEL-FI GO MOBILE REPEATER

THE CEL-FI REPEATER HAS BEEN TESTED, AUTHORISED AND APPROVED BY THE NETWORK PROVIDERS



Nextivity's Cel-Fi GO is a cost-effective and intelligent indoor coverage solution operating on 3G 850Mhz and 4G 700/1800 bands. It is designed to dramatically boost indoor voice quality and increase data speeds for HSPA or LTE consumers. The Cel-fi GO differs greatly from the standard indoor repeater due to its ability to not interfere with the mobile network or other users. Often referred to as a Smart Repeater, the Cel-Fi has the ability to provide maximum coverage, be network friendly and can be easily installed by the end user.

- Increase your mobile coverage to dependable levels
- Ups your data speed and saves your battery usage
- Made for vehicles, marine, caravan and transport applications
- Boost your signal by up to 100dB of system gain
- Kits available Include external and internal antennas
- Unit is Locked to your specific Mobile Network
- Carrier authorised and approved product
- 3G/4G Band Selection Button with status display
- Bluetooth WAVE App for iPhone, Android & PC
- 12Vdc accessories plug power for vehicles



Bluetooth  
WAVE App Remote Control

HOW IT WORKS  
[Click Here](#)



## TELSTRA CEL-FI GO MOBILE REPEATER

THE CEL-FI REPEATER HAS BEEN TESTED, AUTHORISED AND APPROVED BY TELSTRA FOR USE WITH TELSTRA, ALDI MOBILE, BOOST MOBILE, WOOLWORTHS CONNECT + OTHER MVNO'S

Note: Cel-Fi GO will boost a single band at a time (either 3G 850 or 4G 700 or 4G 1800). This and other functions are controllable by a bluetooth app to control your Cel-Fi GO. Voice on 4G (VoLTE) will only work in selected areas and with later model phones.



Type	External Antenna	Internal Antenna	Code
Vehicle Unit	Required*	Adhesive Mount	RPR-CF-00063
Vehicle Kit	Magnetic 5dBi	Adhesive Mount	RPR-CF-00105
Vehicle Kit	Trucker 8dB Black	Adhesive Mount	RPR-CF-00115
Vehicle Kit	Trucker 8dB White	Adhesive Mount	RPR-CF-00106
Marine Kit	Marine 10dB + Mount	Adhesive Mount	RPR-CF-00128
Marine Kit	Marine 10dB + Mount	Wall Mount Panel	RPR-CF-00104
Marine Kit	Marine 10dB + Mount	Dome Ceiling	RPR-CF-00126
Caravan Kit	Marine 10dB + Mount	Dome Ceiling	RPR-CF-00118
Caravan Kit	LPDA 14dBi (698-2700)	Dome Ceiling	RPR-CF-00400
Caravan Kit	Marine 10dB + Mount	Wall Mount Panel	RPR-CF-00401



## OPTUS CEL-FI GO MOBILE REPEATER

CEL-FI GO REPEATER HAS BEEN TESTED, AUTHORISED AND APPROVED BY OPTUS FOR USE WITH OPTUS, AMAYSIM, DODO, PLUS MORE

Cel-Fi GO will boost a single band at a time: 3G (900) or 4G (700/1800). It is highly recommended to leave the GO in 3G mode to ensure voice calls are received. Voice on 4G (VoLTE) will only work in selected areas and with later model phones.



Type	External Antenna	Internal Antenna	Code
Vehicle Unit	Required	Adhesive Mount	RPR-CF-00224
Vehicle Kit	Magnetic 5dBi	Adhesive Mount	RPR-CF-00243
Vehicle Kit	Trucker 8dB Black	Adhesive Mount	RPR-CF-00247
Marine Kit	Marine 10dB + Mount	Adhesive Mount	RPR-CF-00333
Marine Kit	Marine 10dB + Mount	Wall Mount	RPR-CF-00240
Marine Kit	Marine 10dB + Mount	Dome Antenna	RPR-CF-00295
Caravan Kit	Marine 10dB + Mount	Wall Mount	RPR-CF-00327
Caravan Kit	Marine 10dB + Mount	Dome Antenna	RPR-CF-00414



## VODAFONE CEL-FI GO MOBILE REPEATER

CEL-FI GO2 REPEATER HAS BEEN TESTED, AUTHORISED AND APPROVED BY VODAFONE AUSTRALIA FOR USE WITH VODAFONE AUSTRALIA, TPG, IINET, REDBULL MOBILE, GoTALK, PLUS MORE MVNO'S.

GO2 is dual band for operating on BOTH Vodafone's 3G and 4G networks. VODAFONE REGIONAL COVERAGE NOT SUPPORTED  
GO2 for Vodafone will not boost the Vodafone Regional network. You can tell you're using the Regional Network when 'Vodafone AU R' or 'Voda R' appears on your phone. This is due to the Regional Network roaming on a partners network.



Type	External Antenna	Internal Antenna	Code
Vehicle Kit	*Required	Adhesive Mount	RPR-CF-00228
Vehicle Kit	Magnetic 5dBi	Adhesive Mount	RPR-CF-00296
Vehicle Kit	Trucker 8dB Black	Adhesive Mount	RPR-CF-00298
Marine Kit	Marine 10dB + Mount	Adhesive Mount	RPR-CF-00310
Marine Kit	Marine 10dB + Mount	Wall Mount	RPR-CF-00241
Marine Kit	Marine 10dB + Mount	Dome Antenna	RPR-CF-00242
Caravan Kit	Marine 10dB + Mount	Wall Mount	RPR-CF-00305
Caravan Kit	Marine 10dB + Mount	Dome Antenna	RPR-CF-00415



Cellular Reception Extenders Stationary Cel-Fi Building

## CEL-FI GO STATIONARY REPEATER

THE CEL-FI REPEATER HAS BEEN TESTED, AUTHORISED AND APPROVED BY THE NETWORK PROVIDERS

The Cel-Fi GO Smart Repeater is the ideal product to boost and distribute a 3G/4G mobile signal within a building. Supporting voice and mobile internet for multiple mobile devices, boosting your indoor mobile coverage has never been easier.

- Designed for building applications giving 100dB of system gain
- Kits include external and internal antennas plus cables
- Australian Legal with Carrier tested and fully approved
- Superior design for not interfering with networks
- Locked to Service providers Mobile Network
- Band Selection on unit and via your phone app
- Bluetooth WAVE App for iPhone, Android & Computers

PACK INCLUDES:

Cel-Fi GO Stationary Model

Choose your internal antenna:

Blackhawk Wall Mount 698-4000MHz 5/7dBi Panel Antenna -150dBc PIM

Blackhawk Ceiling Dome 698-4000MHz 2/5dBi Antenna -150dBc PIM

Choose your external Antenna:

\*Yagi 698-890 14dBi (Note: Lower Band Frequencies Only)

LPDA 698-2700 12/14dBi

Omni High Gain 698-2700 6dBi

10m LMR240 Cable - SMA Male to "N" Male

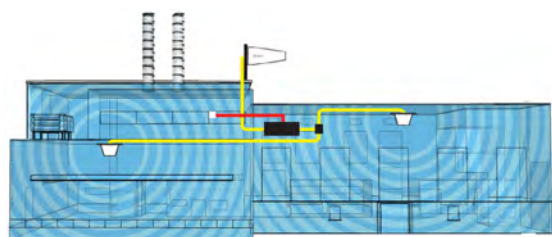
6m LMR240 Cable - SMA Male to "N" Male

240v Power Supply



Bluetooth  
WAVE App  
Remote Control

HOW IT WORKS  
[Click Here](#)



## TELSTRA CEL-FI GO BUILDING REPEATER

TELSTRA, ALDI MOBILE, BOOST MOBILE, WOOLWORTHS CONNECT

Network	External Ant.	Internal Antenna	Code
Telstra	Required	Required	RPR-CF-00065
Telstra	*Yagi 14dBi	Wall Mount	RPR-CF-00112
Telstra	*Yagi 14dBi	Dome Antenna	RPR-CF-00138
Telstra	LPDA 11dBi	Wall Mount	RPR-CF-00113
Telstra	LPDA 11dBi	Dome Antenna	RPR-CF-00121
Telstra	Omni 6dBi	Wall Mount	RPR-CF-00116
Telstra	Omni 6dBi	Dome Antenna	RPR-CF-00122

\*Yagi 698-890 14dBi (Note: Lower Band Frequencies Only)



KIT WITH YAGI\* & WALL MOUNT ANTENNAS

## OPTUS CEL-FI GO BUILDING REPEATER

CEL-FI GO REPEATER HAS BEEN TESTED, AUTHORISED AND APPROVED BY OPTUS FOR USE WITH OPTUS, AMAYSIM, DODO, PLUS MORE

Network	External Ant.	Internal Antenna	Code
Optus	Required	Adhesive Mount	RPR-CF-00224
Optus	LPDA 11dBi	Wall Mount	RPR-CF-00235
Optus	LPDA 11dBi	Dome Antenna	RPR-CF-00236
Optus	Omni 6dBi	Wall Mount	RPR-CF-00231
Optus	Omni 6dBi	Dome Antenna	RPR-CF-00233
Optus	*Yagi 14dBi	Wall Mount	RPR-CF-00325
Optus	*Yagi 14dBi	Dome Antenna	RPR-CF-00338

\*Yagi 698-890 14dBi (Note: Lower Band Frequencies Only)



KIT WITH LPDA & WALL MOUNT ANTENNAS

## VODAFONE CEL-FI GO BUILDING REPEATER

CEL-FI GO2 REPEATER HAS BEEN TESTED, AUTHORISED AND APPROVED BY VODAFONE TO USE WITH VODAFONE AUSTRALIA, TPG, iiNET, REDBULL MOBILE, GoTALK AND MANY MORE

GO2 is dual band for operating on BOTH Vodafone's 3G and 4G networks. VODAFONE REGIONAL COVERAGE NOT SUPPORTED  
GO2 for Vodafone will not boost the Vodafone Regional network. You can tell you're using the Regional Network when 'Vodafone AU R' or 'Voda R' appears on your phone. This is due to the Regional Network roaming on a partners network.

Network	External Ant.	Internal Antenna	Code
Vodafone	*Required	Adhesive Mount	RPR-CF-00228
Vodafone	LPDA 11dBi	Wall Mount	RPR-CF-00237
Vodafone	LPDA 11dBi	Dome Antenna	RPR-CF-00291
Vodafone	Omni 6dBi	Wall Mount	RPR-CF-00232
Vodafone	Omni 6dBi	Dome Antenna	RPR-CF-00234
Vodafone	*Yagi 14dBi	Wall Mount	RPR-CF-00303
Vodafone	*Yagi 14dBi	Dome Antenna	RPR-CF-00315



KIT WITH OMNI & DOME ANTENNAS

Cellular Reception Extenders Mobile Cel-Fi GO - Portable Case

## CEL-FI GO CELLMATE V2 – PORTABLE MOBILE REPEATER

FULLY APPROVED - 240V OR 12V WITH BATTERY UPS (10Hrs) - BUILT IN TX ANTENNA - EXTRA RUGGED TRANSPORT CASE

The Cel-Fi Cellmate Smart Repeater is an ideal temporary solution to boost and distribute a 3G/4G mobile signal within a vehicle or on-site. Supporting voice and mobile internet for multiple mobile devices. Essential for where dropped calls and slow internet need to be minimised. Cellmate features a Cel-Fi GO, power supply and battery backup in a Pelican Case 1400 which is IP67 Watertight, crush-proof and dust-proof. The case has the transmitter antenna in the base and an isolation shield in the lid so you position the case to project the boosted signal. An external 3G/4G reception antenna, mount and cable is required, see the following pages for the best antenna to suit your situation.

- Cel-Fi repeater for repeating 3G and/or 4G networks (carrier specific)
- Select manual or auto, to boost 3G or 4G (only one band at a time)
- Pelican Case 1400 - IP67 Watertight, crushproof, and dustproof – 340x295x152mm
- 240 Mains Power Supply & 12V Vehicle accessory Lighter power supply inbuilt charger
- Truly portable solution with inbuilt battery – supplies power for up to 10 hours
- Bluetooth Cel-Fi WAVE App control. Reception level, boost level, 3G or 4G mode.
- Internal transmit antenna in the base of the case 5dBi thin panel type antenna
- External SMA/F Antenna port for connection to a high gain reception antenna
- External antenna, mount and cabling are sold separately



### TELSTRA GO 3G (850) OR 4G (700/1800) – SINGLE BAND

Network	Code
Telstra	RPR-CF-00538



### OPTUS GO 3G (900) OR 4G (700/1800) – SINGLE BAND

Network	Code
Optus	RPR-CF-00340



### VODAFONE GO2 3G(900) AND 4G(850/1800/2100) – DUAL-BAND

Network	Code
Vodafone	RPR-CF-00319



#### Powering Cellmate

The system can be powered from:

- Mains Power - using the included 240v mains adaptor
- DC Power - using the included 12v accessory plug adaptor
- Internal Battery - providing power for 6 to 10 hours



#### Charging the Internal Battery

- Connect a 12V accessory adaptor or 240V mains power supply to the 'power port' on the Cellmate, charging will start.

#### Connect External Antenna

- To received a mobile signal an external antenna that supports your carriers specific cellular bands must be connected to the antenna port.
- The external antenna, mount and cable is not included with the Cellmate.
- We offer a range of Blackhawk antennas that have been tested with Cellmate.

#### Optimising the Antennas

Cellmate includes an embedded 'service antenna' built into the base of the case. The lid of the case features an RF shield to assist with isolation.

Antenna Isolation is Important: For Cellmate to work at optimal boost you need to separate/ isolate the inbuilt 'service antenna' from the external antenna as much as possible. If the external antenna picks the signal that is disbursed from the inbuilt coverage antenna, then the boost and signal coverage area will be reduced.

#### Download Cel-Fi WAVE App

Cel-Fi WAVE is an App on your smart phone that enables you optimise the antenna setup:

- Check the input signal level from the network
- Check the 'Boost' figure (6-9 is ideal)
- Change mode or use the Mode Switch on the Cel-Fi GO
- 3G -will boost a 3G signal, • 4G/4GX -will boost a 4G signal
- Auto -will boost the strongest 3G or 4G signal

Note: Telstra/Optus units will only boost one band at a time

Note: Vodafone unit will not boost regional (Vodafone shares carriers)



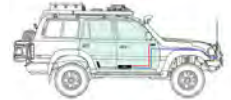
## Vehicle Cel-Fi Mobile Accessories

### CEL-FI MOBILE TRUCKER WHIP ANTENNA - BLACKHAWK

IDEAL FOR ALL CARRIER BANDS TELSTRA, OPTUS AND VODAFONE 3G/4G.

- 4(6) dBi gain across lower bands 698-960 MHz
- 6(8) dBi gain across upper bands 1710-2170 MHz
- Available in short 68cm(4/6dBi) or longer 100cm(6/8dBi)
- can be mounted directly on a bullbar, Bracket additional
- Included is 4m of LMR240 Ultra Flex cable fitted with SMA-Male
- Made of ruggedised fibreglass to withstand 210km/h winds
- Suitable for all mobile phone service carriers

Gain	Length	Colour	Code
4/6dB	680mm	Black	ANT-BH-OM-205B
4/6dB	680mm	White	ANT-BH-OM-205W
6/8dB	1070mm	Black	ANT-BH-OM-202TB-2
6/8dB	1070mm	White	ANT-BH-OM-202TW



## Stationary Cel-Fi Accessories

### CEL-FI YAGI 14dBi LOW BAND - BLACKHAWK

IDEAL FOR TELSTRA NEXT-G AND 4GX NETWORKS, OPTUS, VODAFONE 3G/4G AND THEIR MVNO's

- Ruggedised fully welded construction for extreme conditions
- Powder coated finish, Mounting clamp included
- 30cm pig tail terminated N Female
- Perfect solution for voice and data applications where high gain antennas are required
- Ideal for fixed wireless terminals, mobile broadband Internet and smart repeater applications
- ANT-BH-YG-100-10 includes a 10m LMR240 cable N-Male to SMA-Male

Includes	Gain	Length	Code
No cable	14dBi	1290mm	ANT-BH-YG-100
10m LMR240 SMA-M to N-M cable	14dBi	1290mm	ANT-BH-YG-100-10



### CEL-FI ANTENNA LPDA 11dBi - BLACKHAWK

IDEAL FOR TELSTRA NEXT-G AND 4GX NETWORKS, OPTUS, AND VODAFONE 3G/4G

- 11 dBi gain across lower bands 698-960 MHz
- 12 dBi gain across upper bands 1710-2700 MHz
- 30 cm tail with pre-terminated N Female connector
- Fully welded, powdercoated aluminium design
- Stainless steel mounting clamp included
- Ideal for high speed 3G and 4G LTE applications.
- Ideal for Telstra Next-G and 4GX networks, Optus, and Vodafone 3G/4G.
- ANT-BH-YG-LPDA-10 includes a 10m LMR240 cable N-Male to SMA-Male

Includes	Gain	Length	Code
No Cable	11dBi	450mm	ANT-BH-YG-LOG-LPDA
10m LMR240 SMA-M to N-M cable	11dBi	450mm	ANT-BH-YG-LPDA-10



### CEL-FI ANTENNA OMNI 6dBi - BLACKHAWK

IDEAL FOR TELSTRA NEXT-G AND 4GX NETWORKS, OPTUS, AND VODAFONE 3G/4G

- 6 dBi gain across lower bands 698-960 MHz
- 6 dBi gain across upper bands 1710-2700 MHz
- Ruggedised construction for Australian conditions
- 63x680mm Long UV-stable PVC construction
- Stainless steel L-bracket included
- Integrated N-Female connector
- ANT-BH-OM-204-10 includes a 10m LMR240 cable N-Male to SMA-Male

Includes	Gain	Length	Code
No Cable	6dBi	680mm	ANT-BH-OM-204
10m LMR240 SMA-M to N-M cable	6dBi	680mm	ANT-BH-OM-204-10



### CEL-FI WIDEBAND LPDA 9/10dBi - BLACKHAWK

IDEAL FOR TELSTRA NEXT-G AND 4GX NETWORKS, OPTUS, AND VODAFONE 3G/4G

- 9 dBi gain across lower bands 698-960 MHz
- 10 dBi gain across upper bands 1695 to 2700 MHz
- Lightweight, compact design
- Mounting clamp included
- 30 cm tail with pre-terminated N Female connector
- 10 m LMR240 cable N Male – SMA Male connectors included with ANT-BH-YG-WIDE-10
- Great cost-effective antenna.

Includes	Gain	Length	Code
No Cable	9-10dBi	442mm	ANT-BH-YG-300
10m LMR240 SMA-M to N-M cable	9-10dBi	442mm	ANT-BH-YG-WIDE-10



## Stationary Cel-Fi Accessories

### CEL-FI INDOOR SLIM CEILING ANTENNA 3/5dBi - BLACKHAWK

IDEAL FOR TELSTRA NEXT-G AND 4GX NETWORKS, OPTUS, AND VODAFONE 3G/4G

- 3 dBi gain across lower bands 698-960 MHz
- 4 dBi gain across lower bands 1690-2170 MHz
- 4 dBi gain across lower bands 2300-2500 MHz
- 5 dBi gain across upper bands 2500-2700 MHz
- 360° Horizontal Beamwidth
- UV Stabilised ABS Radome construction
- Stainless steel L-bracket included
- Integrated N-Female connector

Size	Gain	Code
7.3x190mmØ	3-5dBi	ANT-BH-00010



### CEL-FI ANTENNA CEILING MOUNT - BLACKHAWK

698-4000 2-5dBi

Operating on all 3G and 4G frequencies in Australia and abroad, this high grade antenna can be used in a range of residential, commercial, and industrial mobile broadband applications on any mobile network.

Band	3G/4G
Size	86x186mmØ
Code	ANT-BH-OM-C

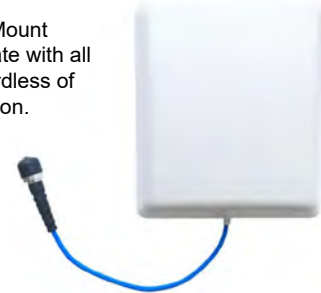


### CEL-FI ANTENNA WALL MOUNT - BLACKHAWK

698-4000MHz 5-7dBi

The Blackhawk Indoor Wall Mount Antenna is designed to operate with all mobile carriers in mind, regardless of what frequency they operate on.

Band	3G/4G
Size	180x158x60mm
Code	ANT-BH-WAL



### "N" TO SMA LEADS

LOW-LOSS PATCH LL195 or LL400 50Ω Coax SMA Male to "N" Male

Length	Coax	Code
1.5M	LL195	CAL5060
3.0M	LL195	CAL5043
5.0M	LL195	CAL5044
10M	LL195	CAL5045
15M	LL195	CAL5046
20M	LL195	CAL5047
5.0M	LL400	CAL5080
10M	LL400	CAL5081
15M	LL400	CAL5082
20M	LL400	CAL5083
25M	LL400	CAL5084



### CEL-FI GO ANTENNA ATTENUATOR

- Connector Type: N Female to N Male
- Frequency Support: 0-3GHz

Type	Code
Attenuator -6dB	ACC-BH-ATT-6N
Attenuator -10dB	ACC-BH-ATT-10N
Attenuator -15dB	ACC-BH-ATT-15N



### SMA-M TO SMA-F PANEL MOUNT LEAD

DOUBLE NUT FOR PANEL MOUNTING THE FEMALE SMA

Length	Coax	Code
6.0M	LL195	CAL5098
3.0M	LL195	CAL5099
4.0M	LL195	CAL5103



### CEL-FI GO ANTENNA SPLITTER SMA

- These splitters have high 'Port-to-Port Isolation' and are recommended for DAS applications:
- Connection: SMA Female
- Min: 22dB
- Avg: 30dB

Type	Code
Splitter 2 Way	ACC-IS-00004
Splitter 3 Way	ACC-IS-00005
Splitter 4 Way	ACC-IS-00006



### SMA-M TO SMA-M LEADS

LOW-LOSS PATCH

LL195 50Ω Coax SMA Male to Male

Length	Coax	Code
1.5M	LL195	CAL5048
3.0M	LL195	CAL5049
5.0M	LL195	CAL5050



### CEL-FI GO ANTENNA SPLITTER N

- These splitters have high 'Port-to-Port Isolation' and are recommended for DAS applications:
- Connection: N Female
- Min: 22dB
- Avg: 30dB

Type	Code
Splitter 2 Way	ACC-IS-00001
Splitter 3 Way	ACC-IS-00002
Splitter 4 Way	ACC-IS-00003



## □ Cel-Fi Advantages

### Provides Indoor Mobile Coverage

All you need is somewhere in your home that gets at least 1 bar of 3G or 4G signal in your home, to enable the Cel-Fi to provide indoor coverage.

Simply place the Cel-Fi boxes inside your home and enjoy having great mobile reception.

The indoor coverage is determined by several factors including the mobile signal strength at the Window Unit and the amount of walls in your home.

No longer will you need to go outside or be in a particular room of your house to make a phone call.



### Extends Mobile Phone Battery Life

Mobile phones use a lot more energy when in poor signal areas. The phone adjusts its internal power to compensate in an attempt to boost the poor signal. As a result the phone will consume a lot more battery power.

Using the Cel-Fi system your indoor mobile signal should be high and the battery will last noticeably longer for you to talk, check Facebook and browse the internet.

### Increases Mobile Data Speeds

Slow internet speeds on your mobile device are often caused by low signal. If you suffer from low signal in your home you will be able to relate to the frustration of trying to access email or the internet.

Cel-Fi will amplify the mobile signal and increase your data speeds dramatically. Email, internet, video and social networking speeds will be like you never left the office.

Instead of purchasing fixed home broadband services, you can now use your mobile broadband as your primary internet source and save on internet costs.



### Improves Voice Quality

The quality of a voice call is usually determined by the phones signal strength and nearby interference.

With full signal strength inside your home and no interference, the Cel-Fi will provide crystal clear voice quality for your mobiles.

### Decreased Radiation to Mobile Users

Mobile radiation is at its greatest when your phone is using maximum power and when its close to your body.

By increasing the indoor signal strength using a Cel-Fi, your phone will not have to work as hard, lower its power and therefore decreasing radiation for the user.

### Mobile Network Protection

Many mobile service providers have not supported the use of personal repeaters on their network. This is due to the interference they can cause when connected to the network, or when they are setup incorrectly. The Cel-Fi system is the only personal repeater that has been widely approved by carriers in Australia.

The Cel-Fi system is very different to a standard repeater, as it was designed to provide maximum coverage, be network friendly and can be easily installed by the end user. It does this in several ways by:

- continuously monitoring power levels of the cell tower it is connected to and constantly adjusting the Cel-Fi's output power to suit.
- only amplifying and disbursing a particular carrier's mobile signal, operating within a set frequency band.
- giving the service provider the ability to shut down the repeater remotely if needed, using a signal from the base station.
- not interfering with the carrier's network or other users on the network.
- having a unique installation process to eliminate feedback into the mobile network.

### Are Cel-Fi Repeaters Legal in Australia?

Yes Cel-Fi has been approved by Telstra, Optus and Vodafone" for use on their 3G & 4G networks in Australia.



WAVE App  
Remote  
Control

- Check for Software Updates
- View Tech Mode
- Modify the external antenna setting by frequency



# CEL-FI GO Smart Signal Repeater

Your mobile solution to improve 3G/4G voice and data coverage

## IMPROVE YOUR MOBILE COVERAGE ON THE MOVE

Good things do come in small packages.

Cel-Fi GO is a 3G/4G mobile signal amplifier that provides up to 70 dB of signal gain - 30x more powerful than a standard antenna/cradle set-up. All the while unconditionally protecting the mobile network.



## BENEFITS OF CEL-FI GO



### Provides Coverage For Automotive Applications

Simply install Cel-Fi GO inside your vehicle and enjoy having great 3G or 4G mobile reception. No longer will you need to stop or drive to a particular spot to be able to make and receive phone calls. Your Cel-Fi GO can be configured to improve the mobile coverage for all types of vehicles from cars to trucks, to farm machinery and caravans, all with only a change in antenna.



### Increases Mobile Data Speeds

Slow internet speeds on your mobile device are often caused by low signal. If you suffer from low signal on the go, you will be able to relate to the frustration of trying to access email or the internet. Cel-Fi GO will amplify the available LTE or HSPA mobile signal and increase your data speeds dramatically. Email, internet, video and social networking speeds can achieve up to 4x improvement. Note: The 4G/LTE bands can only be utilised for data (not calls) unless both the smart phone and the local network support Voice over LTE (VoLTE).



### Extends Mobile Phone Battery Life

Mobile phones use a lot more energy when in poor signal areas. The phone adjusts its output power to compensate in an attempt to boost the poor signal. As a result the phone will consume a lot more battery power. Using Cel-Fi GO, your indoor mobile signal should be high and the battery will last noticeably longer for you to work and talk while on the move.



### Eliminates Dropped or Missed Calls

Never miss or lose an important call while on the move because of coverage issues again. Cel-Fi GO will provide improved coverage in your vehicle so you can be contacted when required. No longer do you have to put up with calls dropping out or terminating during conversation while on the move.



### Improves Voice Quality

The quality of a voice call is usually determined by the phone's signal strength and nearby interference. With improved signal strength inside your vehicle, Cel-Fi GO mobile version will provide crystal clear voice quality for your cell phones.

GOMob0716





## CEL-FI GO FEATURES

- ➔ The mobile solution approved by Telstra and meeting ACMA regulations.
- ➔ Amplifies and disburse a 3G (HSPA) or 4G (LTE) Telstra mobile signal. Note: Cel-Fi GO will only boost one frequency band at a time.
- ➔ Provides manual selection of 3G or 4G or utilise the auto band selection. Band selection is via a button on top of the unit or using the WAVE App.
- ➔ Once installed, Cel-Fi GO has Automatic Gain Control (AGC) continuously monitoring system path loss to deliver maximum gain up to 70 dB.
- ➔ Provides mobile coverage in and around the vehicle/area.
- ➔ Rigid cast-aluminium casing with IP54 rating, suitable for adverse environments.
- ➔ Network-Safe protection that monitors mobile base stations in real time to ensure no interference with the normal function of the mobile network.
- ➔ Cel-Fi GO supports Bluetooth Connectivity or Micro USB connection to Nextivity's Smartphone or PC WAVE App.
- ➔ Intuitive WAVE App allows quick and easy installation by a trained technician.

### NOTES

Cel-Fi GO will provide coverage for 20+ active users depending on the mobile network capacity in your area.

The 4G/LTE bands can only be utilised for data if both the smart phone and the local network support Voice over LTE (VoLTE). You will need to check your smart phone to confirm it has VoLTE functionality.

Cel-Fi GO mobile version will not boost in areas where the signal is already very strong. If the signal is better than -80dBm (3G) or -95dBm (4G) the mobile GO version will cease to boost to ensure a degraded level of service is not experienced.

## CEL-FI GO MOBILE PACK OPTIONS



### BASE PACK



### RV/TRUCKER PACK



## SPECIFICATIONS

### MODEL

Cel-Fi GO for Telstra - Mobile Version

### CELLULAR BANDS

3G 850 & 4G 700/1800 MHz  
(one frequency band at a time)

### SYSTEM GAIN

Up to 70 dB

### DIMENSIONS

Size: 28MM (H) 87MM (W) 255MM (L)  
Weight: 600g

### ENVIRONMENT

Operating temperature: 0° to 65°C  
Storage temperature: -25° to 65°C  
Relative humidity: 0 to 95%, noncondensing

### POWER

12 VDC via external supply OR cigarette socket  
External supply: 100 to 240 VAC, 47 – 63Hz.  
Power consumption less than 15W per unit

### ANTENNA REQUIREMENTS

SMA Female Outdoor Antenna Connector (50 Ω)  
SMA Female Indoor Antenna Connector (50 Ω)  
Approved antenna are supplied with the units.

### WARRANTY

Cel-Fi GO is covered by a 24 month warranty.

### INSTALLATION

Your Cel-Fi GO is approved if installed correctly. Only qualified resellers who have undertaken product training should perform installation of Cel-Fi GO.

Mobile version Cel-Fi GO's require you to take into account the vehicle's safety mechanisms such as airbags, ABS, Traction Control, Stability Control and Auto Electrics. Incorrect installation may result in water leaks, electrical failure, battery damage, fusing of internal wiring and cables or risk of FIRE.

Misuse of this equipment could result in injury and equipment damage.



# CEL-FI GO Smart Signal Repeater

Your solution to improve 3G/4G voice and data coverage

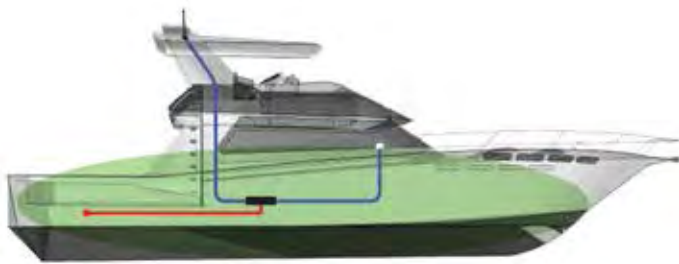
## IMPROVE YOUR MOBILE COVERAGE

Good things do come in small packages.

Nextivity's Cel-Fi GO is a cabled 3G/4G mobile signal amplifier that provides up to 100 dB of signal gain - 30x more powerful than antenna options. All the while unconditionally protecting the mobile network.



## THE BENEFITS OF CEL-FI GO



### Provides Coverage For Custom Applications

Cel-Fi GO Stationary version is more flexible for advanced installations. It is ideal for high 5Ghz areas and those venues where you need a cabled solution to ensure great 3G/4G mobile reception. No longer will you need to move to a particular spot to be able to make and receive phone calls. Your Cel-Fi GO Stationary version can be configured to improve the mobile coverage for many types of applications from dongas to caravans, small marine vessels to school demountables.

### Increases Mobile Data Speeds

Slow internet speeds on your mobile phone are often caused by low signal. If you suffer from low signal, you will be able to relate to the frustration of trying to access email or the internet. Cel-Fi GO will amplify the available LTE/HSPA mobile signal and increase your data speeds dramatically. Email, internet, video and social networking speeds can achieve up to 4x improvement. Note: The 4G/LTE bands can only be utilised for data (not calls) unless both the smart phone and the local network support Voice Over LTE (VOLTE).



### Extends Mobile Phone Battery Life

Mobile phones use a lot more energy when in poor signal areas. The phone adjusts its power output to compensate in an attempt to boost the poor signal. As a result the phone will consume a lot more battery power. Using Cel-Fi GO, your indoor mobile signal should be high and the battery will last noticeably longer for you to work and talk.



### Eliminates Dropped or Missed Calls

Never miss or lose an important call because of coverage issues again. Cel-Fi GO will provide continuous coverage so you can be contacted when required. No longer do you have to put up with calls dropping out or terminating during conversation.



### Improves Voice Quality

The quality of a voice call is usually determined by the phone's signal strength and nearby interference. With improved signal strength inside your building, the Cel-Fi GO stationary version will provide crystal clear voice quality for your cell phones.

G0Stat0316



## CEL-FI GO FEATURES

- ➔ A solution approved by Telstra and meeting ACMA regulations.
- ➔ Amplifies and disburse a Telstra 3G /HSPA/4G (LTE) mobile signal, boosting one frequency band at a time.
- ➔ Provides manual selection of 3G/4G or utilise the auto band selection.
- ➔ Once installed, Cel-Fi GO has Automatic Gain Control (AGC) continuously monitoring system path loss to deliver maximum gain up to 100 dB.
- ➔ Provides a mobile coverage area of 900m2.
- ➔ Rigid cast-aluminium casing with IP54 rating, suitable for adverse environments.
- ➔ Network-Safe protection that monitors mobile base stations in real time to ensure no interference with the normal function of the mobile network.
- ➔ Uplink Muting Mode automatically shuts down uplink cellular transmissions when no active user equipment is detected.
- ➔ Cel-Fi GO supports Bluetooth Connectivity or Micro USB connection to Nextivity's Smartphone or PC WAVE App.
- ➔ Intuitive WAVE App allows quick and easy installation by a trained technician.

### NOTES

Cel-Fi GO will provide coverage for 20+ active users depending on the mobile network capacity in your area.

The 4G/LTE bands can only be utilised for data if both the smart phone and the local network support VoLTE. You will need to check your smart phone to confirm it has VoLTE functionality.



### BASE BUILDING PACK



## SPECIFICATIONS

### MODEL

Cel-Fi GO for Telstra - Stationary Version

### CELLULAR BANDS

3G 850 & 4G 700/1800 MHz  
(one frequency band at a time)

### SYSTEM GAIN

Up to 100 dB

### DIMENSIONS

Size: 28MM (H) 87MM (W) 255MM (L)  
Weight: 600g

### ENVIRONMENT

Operating temperature: 0° to 65°C  
Storage temperature: -25° to 65°C  
Relative humidity: 0 to 95%, noncondensing

### POWER

12 VDC via external supply  
External supply: 100 to 240 VAC, 47 – 63Hz.  
Power consumption less than 15W per unit

### ANTENNA REQUIREMENTS

SMA Female Outdoor Antenna Connector (50 Ω)  
SMA Female Indoor Antenna Connector (50 Ω)

### WARRANTY

Cel-Fi GO is covered by a 24 month warranty.

### INSTALLATION

Your Cel-Fi GO is approved by Telstra if installed correctly. Only qualified resellers who have undertaken product training should perform installation of the Cel-Fi GO.

Misuse of this equipment could result in injury and equipment damage.

Cel-Fi is the choice of professionals to improve in-building mobile coverage.

# INTRODUCING Cel-Fi Cellmate

Introducing Cel-Fi Cellmate, a portable mobile repeater in an industrial case that can be transported and used where mobile signal is needed.

Your Cellmate is ideal for use by emergency services, marine applications, being transported between fleet vehicles, farming vehicles, trucking, construction or mining sites.

## THE PACK INCLUDES:

- Pelican Case 1400 – IP67 Watertight, crushproof, and dustproof – 3390mm x 2950mm x 1520mm
- Cel-Fi GO Mobile Repeater for Telstra
- Cel-Fi Backup Battery – supplies power for 10 hours
- Internal antenna in base of case – Blackhawk 3dBi thin panel antenna
- 240 Mains Power Supply & 12V Cigarette Lighter power supply
- External power and antenna ports

## EXCLUDED FROM THIS PACK

- External Antenna and cable

An external antenna is required to be added to this pack. Your choice will be dependent on your application of Cellmate but a full range of options can be found on the Outdoor and Vehicle Antenna sections on [www.powertec.com.au](http://www.powertec.com.au). A selection of antenna recommendations can be found below.



### Blackhawk Log Periodic Directional Antenna (ANT-BH-YG-LOG-LPDA-10)

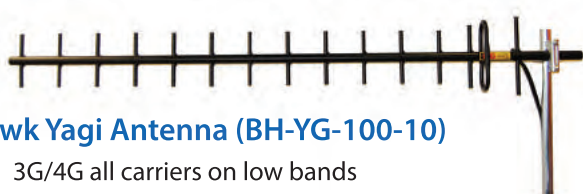
**Network:** 3G/4G all carriers

**Frequency Range:** 698-960/1710-4000 MHz

**Gain:** 11/12 dBi

**Dimensions:** 1240mm H x 200mm W x 60mm D

**Cable:** Supplied with 10 m of flexible PT240 LSHF cable



### Blackhawk Yagi Antenna (BH-YG-100-10)

**Network:** 3G/4G all carriers on low bands

**Frequency Range:** 698-890 MHz

**Gain:** 14 dBi

**Dimensions:** 1290mm H x 210mm W x 70mm D

**Cable:** Supplied with short 30cm tail

### Blackhawk Omni Trucker Series Antennas

**Network:** 3G/4G all carriers

**Frequency Range/Gain:**

**Mini:** 3/5 dBi : 698-960/1710-2700 MHz

**Compact:** 4/6 dBi : 698-960/1710-2170 MHz

**Edge:** 6/8 dBi : 698-960/1710-2170 MHz

**Dimensions:**

**Mini:** 400mm H x 16mm D (ANT-BH-OM-206B)

**Compact:** 680mm H x 20mm D (ANT-BH-OM-205)

**Edge:** 1200mm H x 32.5mm D (ANT-BH-OM-202T)

**Cable:** Supplied with 4m PT240 cable with SMA/M connector



### MARS Multi Band Panel Antenna (ANT-MA-00004)

**Network:** 3G/4G all carriers

**Frequency Range:**

698-960 MHz/1710-2700 MHz

**Gain:** 5/6.5 dBi

**Dimensions:** 231mm H x 215mm W x 37.5 mm D

**Cable:** Additional to fit N Type Female



**Powertec** Telecommunications Pty Ltd

Telephone: 1300 769 378 | +61 7 5577 0500

Email: [sales@powertec.com.au](mailto:sales@powertec.com.au) | Website: [www.powertec.com.au](http://www.powertec.com.au)



# CELLMATE

## Quick Start Guide

Smart Signal Repeater

Cel-Fi Cellmate is a portable mobile repeater in an industrial case that can be transported and used where mobile signal is needed.

Cellmate utilises a Cel-Fi GO to boost a 3G or 4G signal and includes a backup battery with charge for up to six hours.



### Powering Cellmate

**The system can be powered from:**

- Mains Power - using the included 240v adapter
- DC Power - using the 12v cigarette plug adapter
- Internal Battery - providing power for 6 hours

#### Charging the Internal Battery

1) Connect a 12V cigarette adapter or 240V mains power supply to the 'power port' on the Cellmate, charging will start.

#### Battery LED's

Item	Description
	RED ON while ups is charging, RED OFF while ups is full charged
	BLUE ON, ups without input, but ups provides power to device
	BLUE ON while ups with input, device energy comes from the main supply, ups will not release energy
	RED ON while ups in low power
Switch ON/OFF	When ups with full energy and with input ups automatically switch on once it has input and ups battery with enough power . ups connect with load get into work mode automatically.
	When ups without input, press 1 time-switch on , continuously press 2 times-Switch off.

# 2

### Connect External Antenna

To received a mobile signal an external antenna that supports all cellular bands must be connected to the antenna port.

The external antenna is not included with the Cellmate.

We offer a range of Blackhawk antennas that have been tested with Cellmate for many different applications.



# 3

## Optimising the Antennas

### Inbuilt Service Antenna

Cellmate includes an embedded 'service antenna' built into the base of the case. The lid of the case features an RF shield to assist with isolation.

### Antenna Isolation is Important

For Cellmate to work at optimal boost you need to separate/isolate the inbuilt 'service antenna' from the external antenna as much as possible. If the external antenna picks the signal that is disbursed from the inbuilt coverage antenna, then the boost and signal coverage area will be reduced.

### Maximising Isolation

- Ensure the the external antenna is pointed away from the Cellmate, towards the cell tower.
- The case is closed during use
- The base of the case is pointing towards areas where you need signal
- The external antenna is as far away from the case as possible



# 4

## Download Cel-Fi WAVE App

Cel-Fi WAVE is an App on your smart phone that enables you optimise the antenna setup:

- Check the input signal level from the network
- Check the 'Boost' figure (6-9 is ideal)



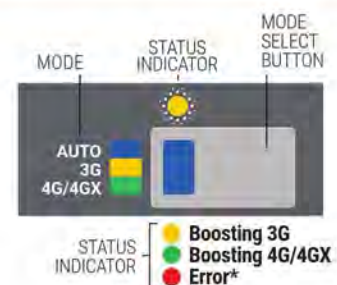
# 5

## Mode Switch on Cel-Fi GO

The mode switch on the front of the GO enables you to switch between:

- 3G - will boost a 3G850 signal
- 4G/4GX - will boost a 4G1800 or 4G700 signal
- Auto - will boost the strongest 3G or 4G signal

Note: GO is only able to boost one band at a time



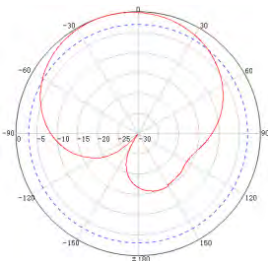


# Blackhawk Low PIM Wall Mount Panel Antenna

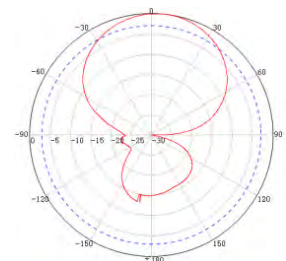
698 - 4000 MHz, 5/7 dBi (ANT-BH-WAL)



Electrical Specifications				
Frequency Range, MHz	698-806	806-960	1690-2700	3300-4000
Gain, dBi	5.0	6.0	8.0	7.0
VSWR	≤2.0	≤2.0	≤1.7	≤1.7
Polarization	Vertical			
PIM, 3rd Order, 2x20W	≤-150 dBc			
Front to Back Ratio	≥8 dB	≥9 dB	≥14 dB	≥10 dB
Horizontal Beamwidth	92°	90°	65°	55°
Vertical Beamwidth	73°	68°	60°	35°
Input Impedance	50 Ω			
Max. Input Power	50 W			
Lightning Protection	DC Ground			
Mechanical Specifications				
Connector	N   4.3-10 DIN Female			
Dimensions	180x158x60 mm			
Weight	0.4 kg			
Reflector Material	Aluminum			
Radome Material	ABS (UV Stabilized)			
Operating Temperature	-40°C to +65 °C			



H-Plane



V-Plane



# Blackhawk Wideband LPDA Antenna (ANT-BH-YG-WIDE-10)

698-2600MHz 10/11dBi

## Specifications

Model		WIDEBAND Yagi	
Freq.Range-MHz		700-960	1710-2600
Beamwidth-°	E	55	50
	H	75±12	65±12
F/B Ratio-dB		≥16	≥18
Gain-dBi		10±1	11±1
VSWR		≤1.5	
Impedance-Ω		50	
Polarization		Vertical	
Maximum Power-W		50	
Connector		N type Female	
Dimensions-mm		442 x 205 x 37	
Weight-Kg		1	
Mast Diameter-mm		φ 40- φ 50	

## Applications

- GSM/CDMA/LTE/3G/4G/WLAN
- 700 - 2600 band

## Features

- Broadband, Low VSWR
- Sealed with radome, strong protection
- Supplied with mast down-tilt bracket
- Supplied 10m LMR240 cable N/M - SMA/M

## Installation Sketch

